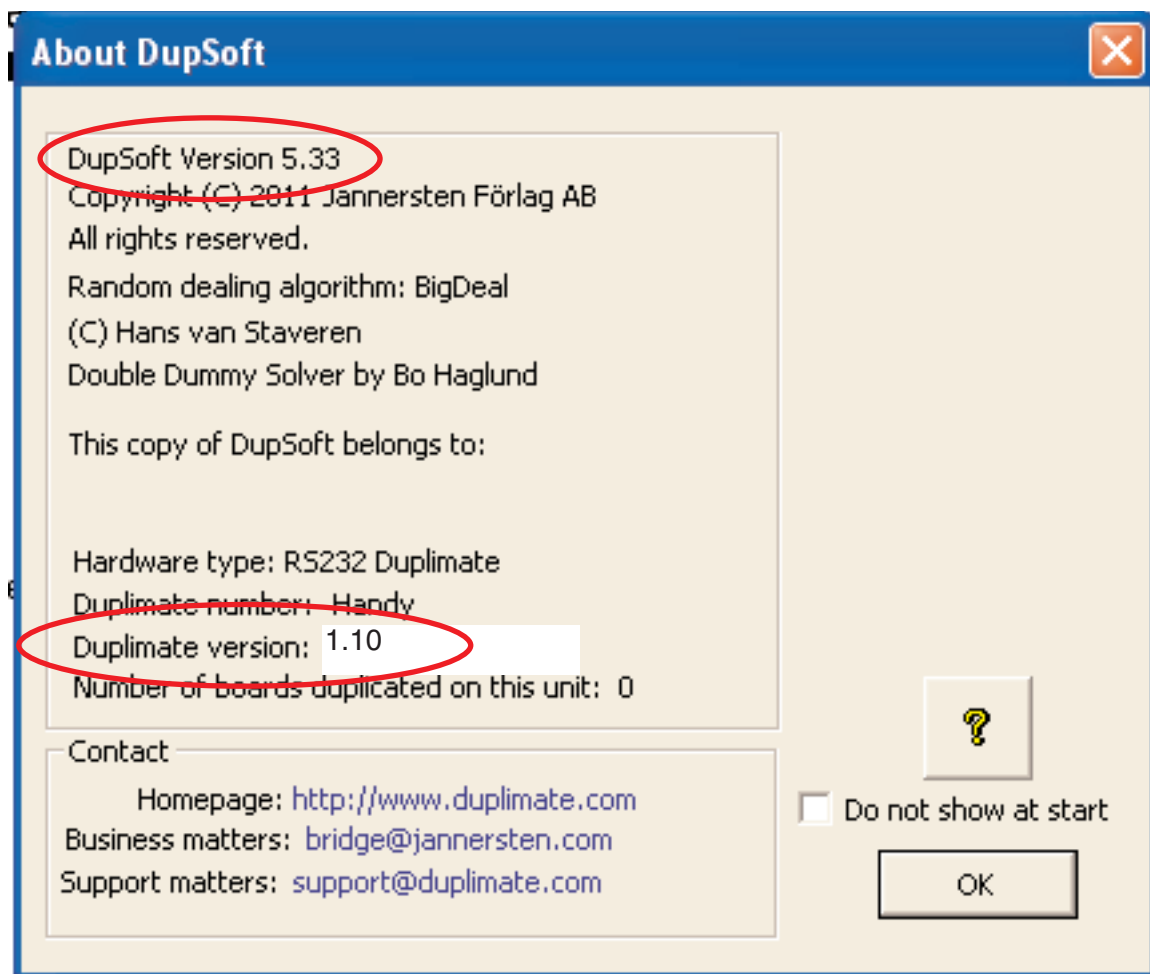


# Version numbers

Version numbers are found in HELP/ABOUT DUPSOFT

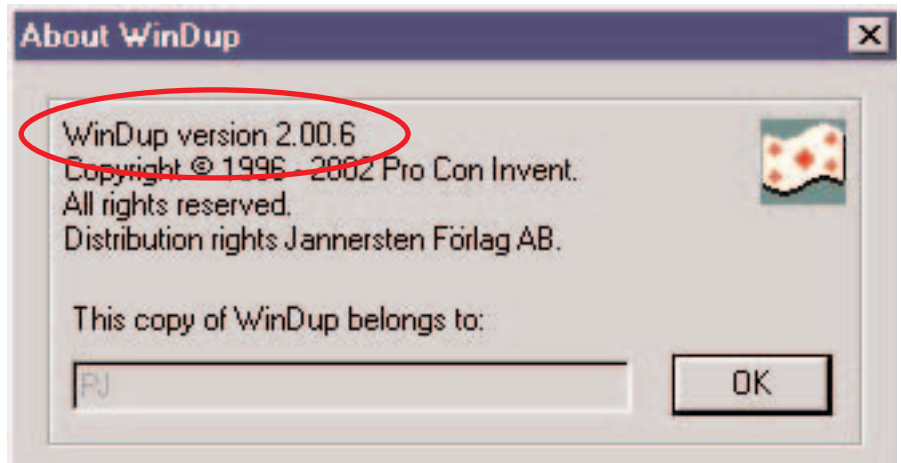
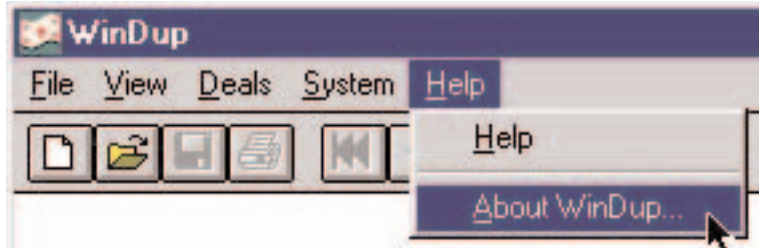


“DupSoft version” is the (PC) software and “Duplimate version” is the Duplimate’s firmware. Note that the Duplimate must be connected and switched on, or its version will not show.

c.f. next page as regards the old type of software.

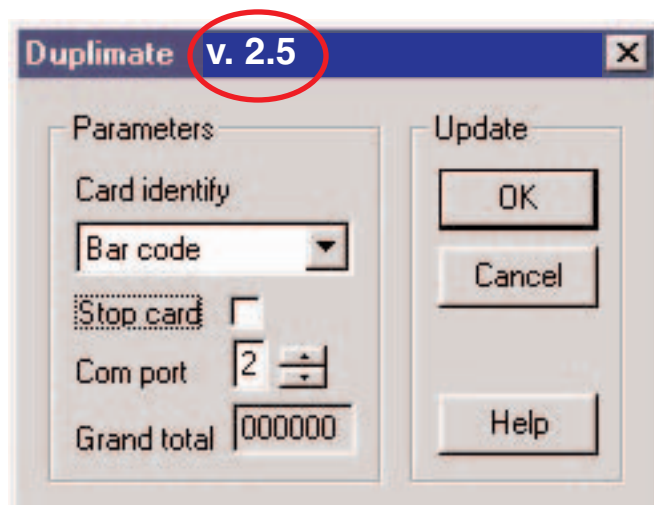
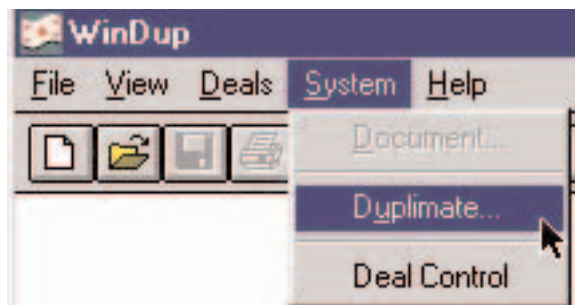
### THE SOFTWARE

The version of the “WinDup” is found in Help/About WinDup.



### THE MACHINE

The version of the dealing machine's software is displayed in System/Duplicate when **when the machine is connected** (and switched on).



### COMPABILITY

See [Barcodes.pdf](#)