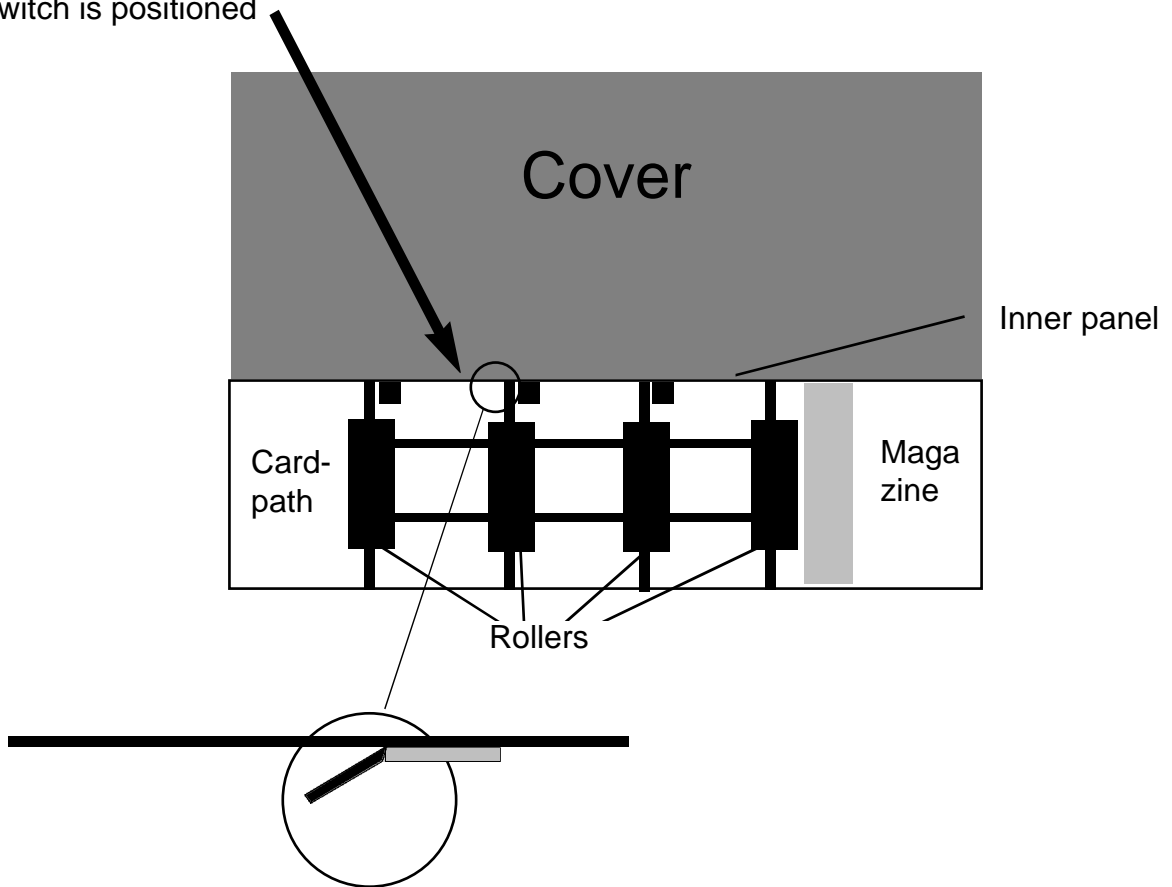


"BOARD OUT OF POSITION"

If you get the message "board out position" when the board is in its inner position, the board-switch is either damaged, out of position, or missing.

The board-switch is positioned



That is to say, at the bottom of the inner panel.

To locate the switch, you are advised to turn the machine 90 degrees so you get the slot for the board in front of your eyes. The board-switch is best described as a piece of (thick) plastic foil.

The function is that the board-switch shall be pushed by (the inner end of) the board and thereby cover the hole behind it in the inner panel.

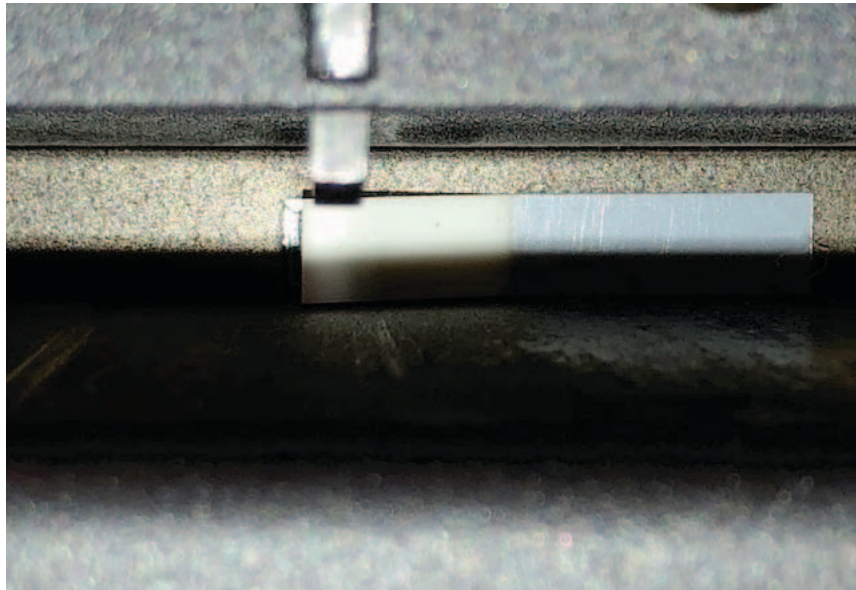
If the switch is missing, you can in emergency replace it with a piece of sturdy card-board, or plastic, that you bend as shown in the illustration above. (At some point you should replace your home-made switch with an original Duplimate switch.)

If the switch is damaged or out of position, please adjust it as shown in the illustration above.

To summarize: Anything white which covers the hole when pushed by a board will work.

Board switch (Dup 4.x)

Put the board switch on the black "floor" where the board goes. Position the adhesive part pointing to the right of the sensor.



Then use a long pair of pincers (or just 2 long flat screwdrivers) to push the switch towards the inner wall where it should be attached. If you miss, you can pull it loose and try again.

