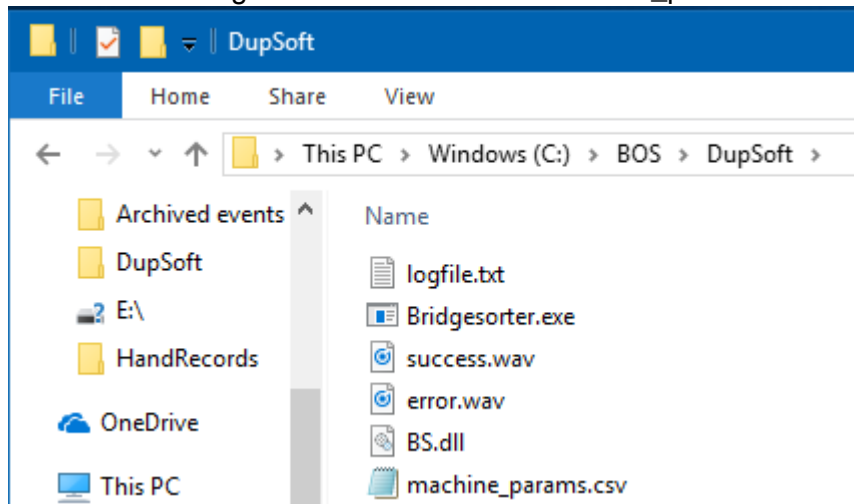


## Re machine parameters

The default settings can be overruled via machine\_params.csv in the DupSoft folder.



The parameters **MUST** be written in the form  
Machine number;xoffset;yoffset;brightness  
1999;0;0;100  
1700;20;60;0

i.e. parameters separated by semi colon (without space)

You should not tamper with these settings unless told by the Help desk

Last revised 170925