

# Feed related messages

## AT START

### 1. ADJUST DECKS

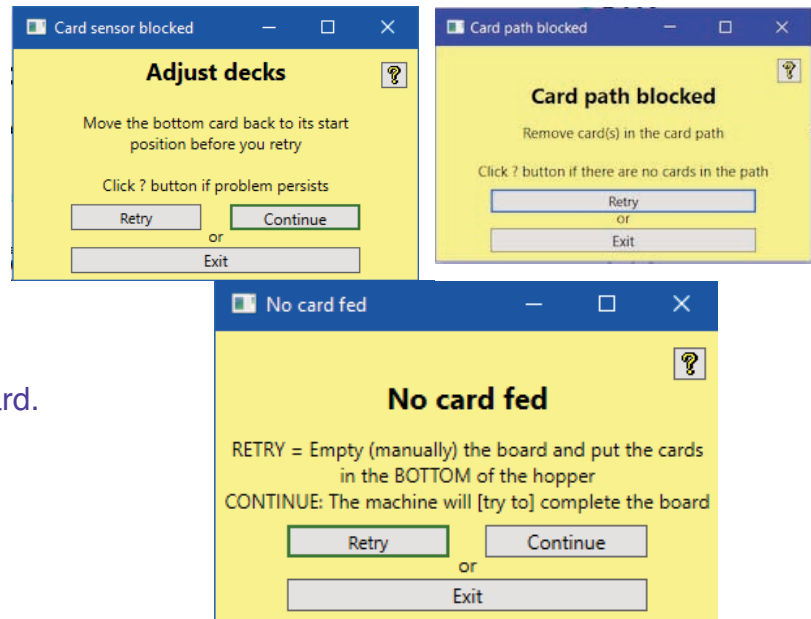
The first sensor is blocked.

### 2. CARD PATH BLOCKED

A sensor in the card path is blocked.

### 3. NO CARD FED

The roller did not move the bottom card.



## DURING DUPLICATION

### 4a. CARD NOT RECOGNIZED, shifted card

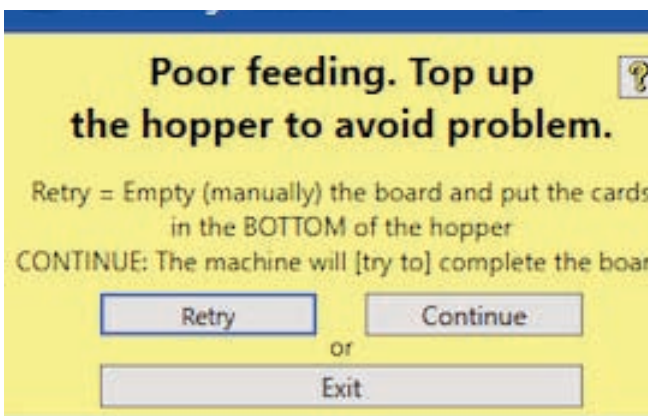
The barcode on the bottom card is out of view.

### 4b. CARD NOT RECOGNIZED, count error

The barcode on the bottom card is out of view. and it is not possible to continue because the count is lost.

### 5a, POOR FEEDING

Time out between two cards



### 5b, POOR FEEDING; wrong count

Time out between two cards and something wrong with the card count,

